

How Does JIE Let Us Do More with
Less? ... and...
What the heck do PlugFest and
DI2E* have to do with that?

Chris Gunderson
MACE TD
Christopher.Gunderson@macefusion.com
831 224 5182

*Defense Intelligence Information Enterprise

Last Year's Conversation

USD(I) and DCGS Enterprise were getting hands' dirty with new Acquisition/Engineering approaches


We pitched MACE is a place to join the party

Explained that RI2P is a government/industry/academic movement for aligning industrial best practice with emerging policy to achieve "Asymmetric, Agile, Acquisition" (A3) strategy

Said PlugFest is a demonstration venue for all the above

Solving Einstein's Dilemma with a Rapid Integration, Innovation, Process (RI2P)

DCGS ENTERPRISE BUILDING A BETTER MOUSETRAP



John Snevely
John.Snevely@osd.mil
703 695 4293

Building a Smarter Planet

IBM

Solving Einstein's Dilemma with a Rapid Integration, Innovation, Process (RI2P)


RI2P: "Einstein's Dilemma Suggests a Proven Commercial Solution"

Rapid Integration and Innovation Process (RI2P)

Andras R. Szakal
VP & CTO IBM U.S. Federal
aszakal@us.ibm.com

May 23, 2012

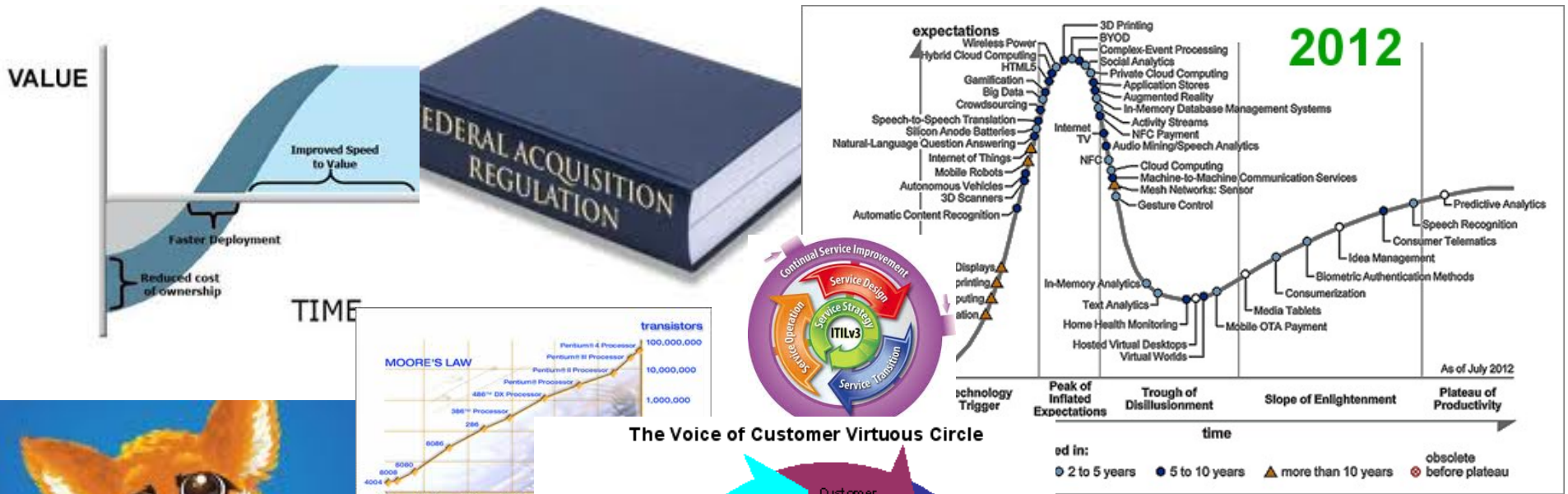
Multi-Agency Collaborative Environment...not your Father's System Command



Chris Gunderson
Christopher.Gunderson@macefusion.com
703 464 6429

© 2011 IBM Corporation

RI2P + A3 = Best IT Practices Pragmatically Bounded by Government Constraints



© Pro-Tution International 2008 with acknowledgement to Larry Shillibe

Looming Threat to the Status Quo?*

PlugFest Demonstration

DI2E Implementation?

Growing Open Consortium of Change Agents

Agile Asymmetric Acquisition

Rapid Innovation Integration Platform

Draconian Budget Reductions

Emerging Enlightened
Government Policy

**Unsustainable
Acquisition Process**

Government information system acquisition is unsat.

**Emerging enlightened policies, e.g. JIE, and Internet plug-and-play paradigms can help ...
...if, and only if**

The government enterprise fundamentally changes its spending paradigms to incentivize the desired fundamentally different outcomes!

PlugFest demonstrates processes, platforms, and people capable of catalyzing the necessary changes.

Defense Intelligence Information Enterprise (DI2E) is a likely early success case

*Status Quo = well documented unsatisfactory government IT acquisition process

Back Up

Industrial Rapid Integration Innovation Process/Platform/People (RI2P*)

- Informed by
 - Many (!!) watchdog reports documenting failures of status quo government IT acquisition process
 - Agile, SOA, Cloud, Product Line Architecture (PLA), OSS, open standards, etc.
 - Government acquisition policy and culture
- Pioneered by open consortium of
 - IT Vendors
 - Integrators
 - Large & small companies
- Aims to apply commercial IT best practices to government enterprise information systems per new enlightened policy mandates

*RI2P is a generic, unbranded, term

Government Agile Asymmetric Acquisition (A3)

- Informed by
 - Government acquisition policy and culture
 - Many (!!) watchdog reports documenting failures of status quo
 - Forward-leaning concepts & policies, e.g. DI2E, JIE, ICD 503, 6212.01F
- Pioneered by growing collaborative of
 - Operators
 - Policy makers
 - Test & certification authorities
 - Project offices
- Implements RI2P, i.e. a profoundly improved process, via “IT Box”* acquisition strategy

*IT Box = New DoD Policy for Acquiring IT per COTS Best Practice

UNCLASSIFIED

IT Box Background



• Why implement an IT Box?

- **Moore's Law:**
"The number of transistors on an Integrated Circuit doubles approximately every 18-24 months."
- The U.S. has been able to leverage rapidly-evolving IT for **decisive military advantage**.
- However, the JCIDS process does not **provide the required flexibility** to take full advantage of evolving commercial information technology.

• JROCM 008-08

- The JROC wants to ensure that IT programs have the flexibility to **"plan for and incorporate evolving technology"** throughout the program's lifecycle.



UNCLASSIFIED



UNCLASSIFIED

JROCM 008-08

- Define **threshold capability levels** based upon what is achievable with today's technology. (CDD & CPD para 6 and JROC Briefing)
- Describe process for approving capability enhancements. Who will have the authority to approve moving beyond the thresholds with evolving technology? (JROC Briefing)
- Describe the plan for delivering capability: (JROC Briefing)
 - How often will releases of new or enhanced capability be delivered?
 - What is the plan for assessing the application of new technologies?
 - What is the plan for technology refresh?
- Identify the level of effort funding which will be used for the software development effort. (CDD & CPD para 15 and JROC briefing)

RI2P Principles

- **Success requires continuous feedback from operational customer**
- Most government information system requirements can be satisfied with COTS solutions
- Best approach is rapid, evolutionary, integration of pre-integrated components
- Modular Open Segment Architecture – optimized for a particular community of capability providers and consumers -- can accommodate all the above

A3 Principles

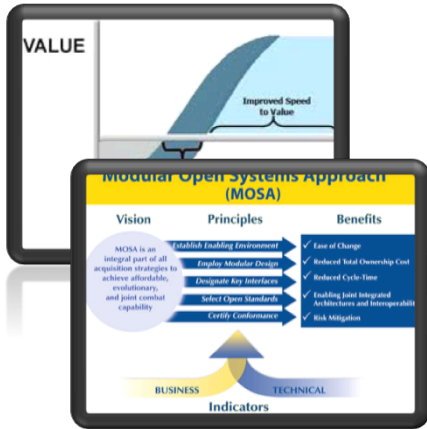
- **RI2P principles + ...**
- **You get what you measure...**
 - Measure operational *impact** of capability...
 - Measure *speed**-to-capability
 - Measure *cost**-per-capability
- **You get what you pay for...** budget and contract for
 - Customer in the loop
 - ***Contract deliverables include achieving measured outcomes (per above) via interoperable components***
 - Continuous, rapid, evolutionary improvement throughout lifecycle

****Interoperability, i.e. runtime and build time reusability, is the key to all three!***

A3 IT Box Acquisition Strategy

Business Case Analysis

Value-Based Acquisition Framework
(Value-based Metrics + Open Segment Architecture + Agile Contracting + COTS Best Practice)



Light Weight Governance



Stable "IT Portfolio" Funding & Low Barrier Contracting

Continuously Delivered, Off-the-Shelf, Easily Procured, Certified, Sustained, Capability Modules



Incentives for Providers and Consumers of Off-the-Shelf Components