



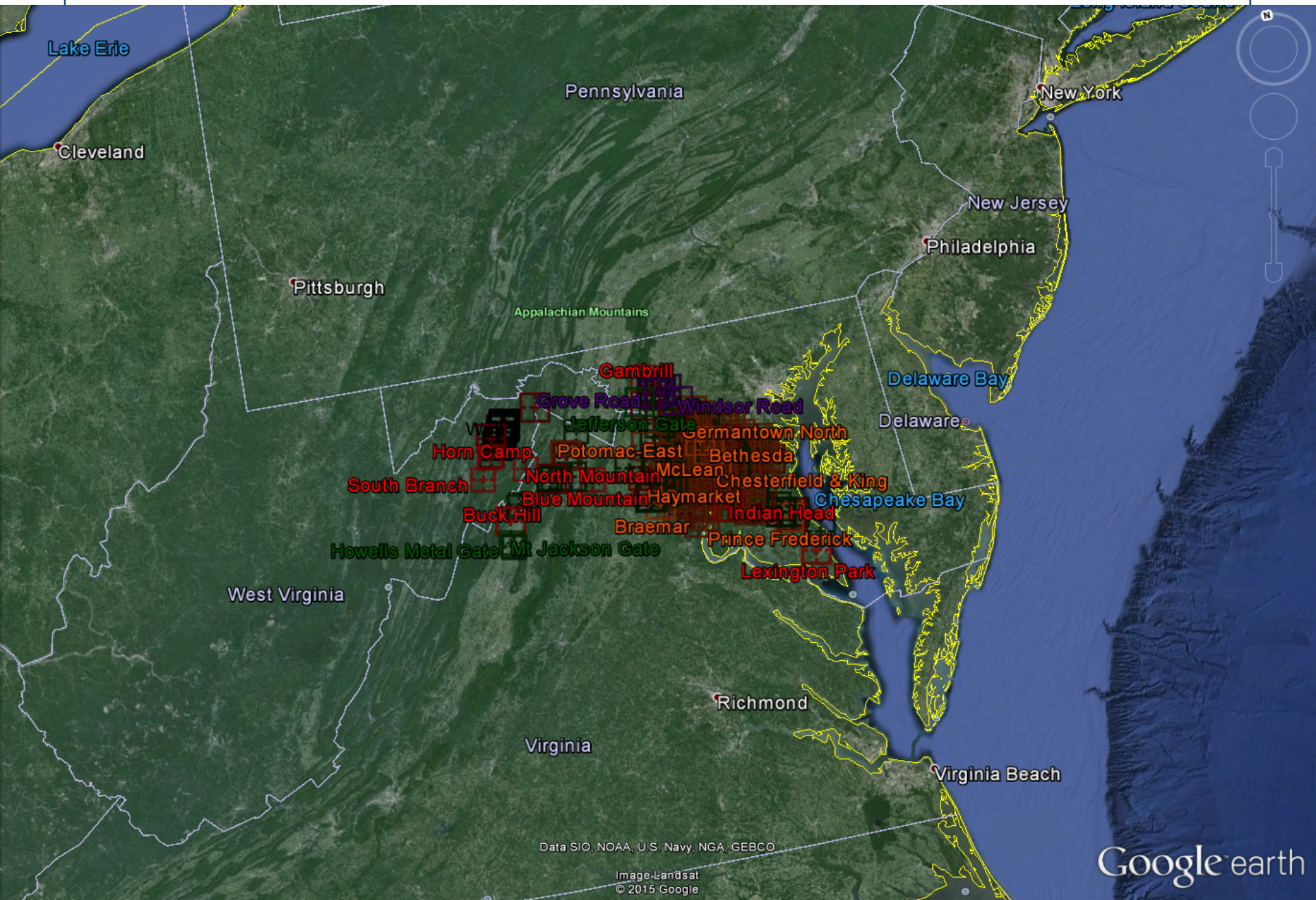
WGL

Energy Answers.

Ask Us.

CRAIG LIGHTNER

SUPERVISOR
AUTOMATION AND
CONTROL



Data SIO, NOAA, U.S. Navy, NGA, GEBCO

Image Landsat
© 2015 Google

Google earth

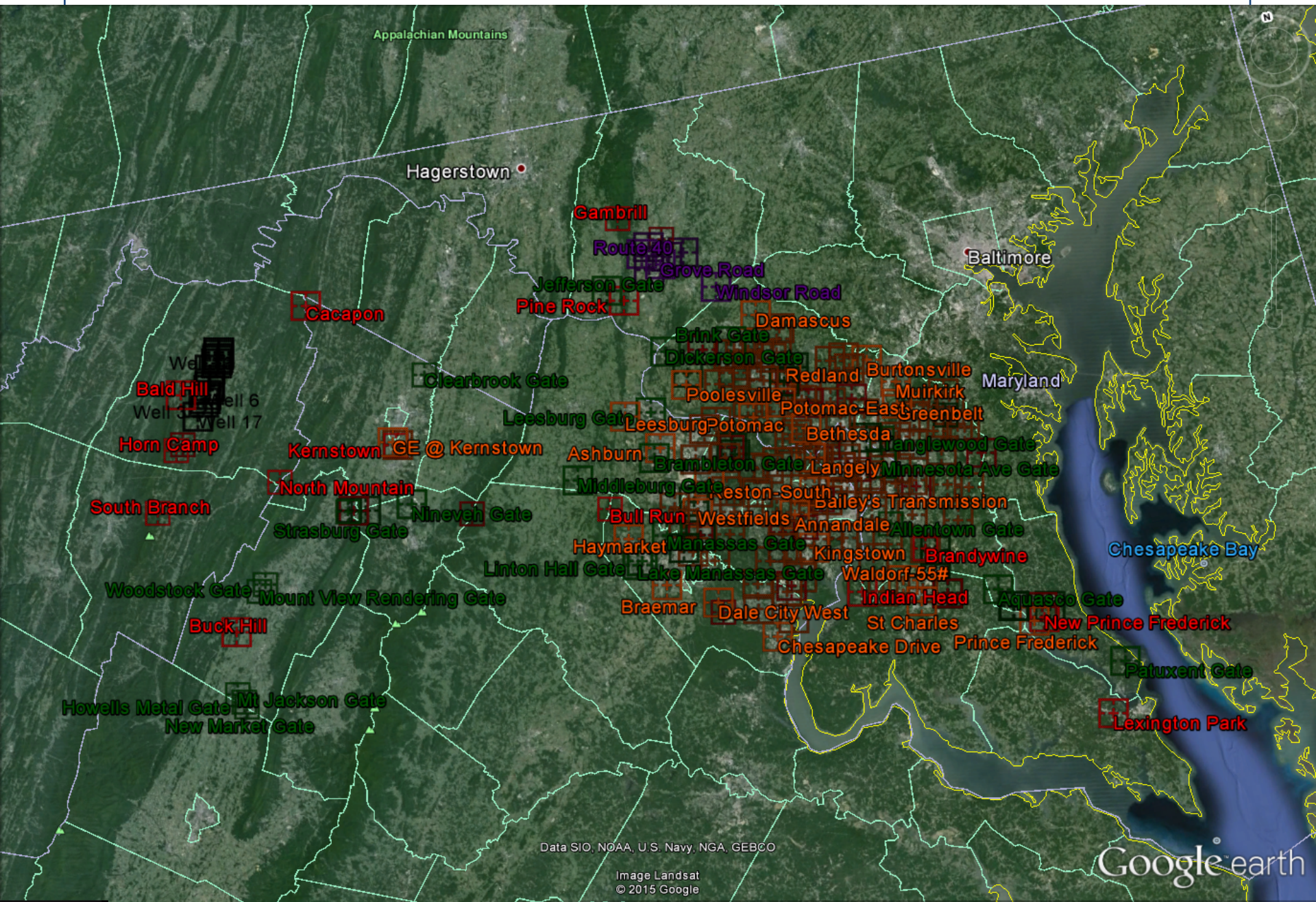
Diversity

Innovation

Service

Sustainability

Performance



Data SIO, NOAA, U.S. Navy, NGA, GEBCO

Image Landsat
© 2015 Google

Google earth

Diversity

Innovation

Service

Sustainability

Performance

Types of Natural Gas Companies

- Gas Production
 - Well Head Production, Landfill Production, Fracking Production
- Gas Transportation
 - Interstate Pipelines
- Gas LDC
 - Local Distribution Company



Diversity

Innovation

Service

Sustainability

Performance

Overview	Login	Alarms
Web Reports	Gate Trend	Score board
RTU'S	TM'S	TM Pilot

Frederick Map	Shenandoah Gas Map
---------------	--------------------

N. Maryland Sub Menu	S. Maryland Sub Menu
----------------------	----------------------

W. Virginia Sub Menu	E. Virginia Sub Menu
----------------------	----------------------

Plants Sub Menu	Hexane Sub Menu
-----------------	-----------------

Maryland Map	Transmission Map
--------------	------------------

Wash. DC Map	Virginia Map
--------------	--------------

Sub Menu:

Eastern Virginia
BRAMBLETON
BULL RUN
CENTREVILLE
CHANTILLY
DRANESVILLE
HERNDON
LEESBURG
MANASSAS
WILLOWSFORD

New Workflow Activity	API Help Popup
-----------------------	----------------

User: Craig Lightner
SCU: 0
\\PSPA001\SHARES\DYNAMICS\PIC_SOC\BGSW

AA Tag List	Alarm List
-------------	------------

Alerts / Alarms

LEL Comm. Bldg
LEL Odor Bldg
Door
RTU COMM
YZ 1
YZ 2
GC Stream
GC Comm. 1
GC Mole %
GC Local

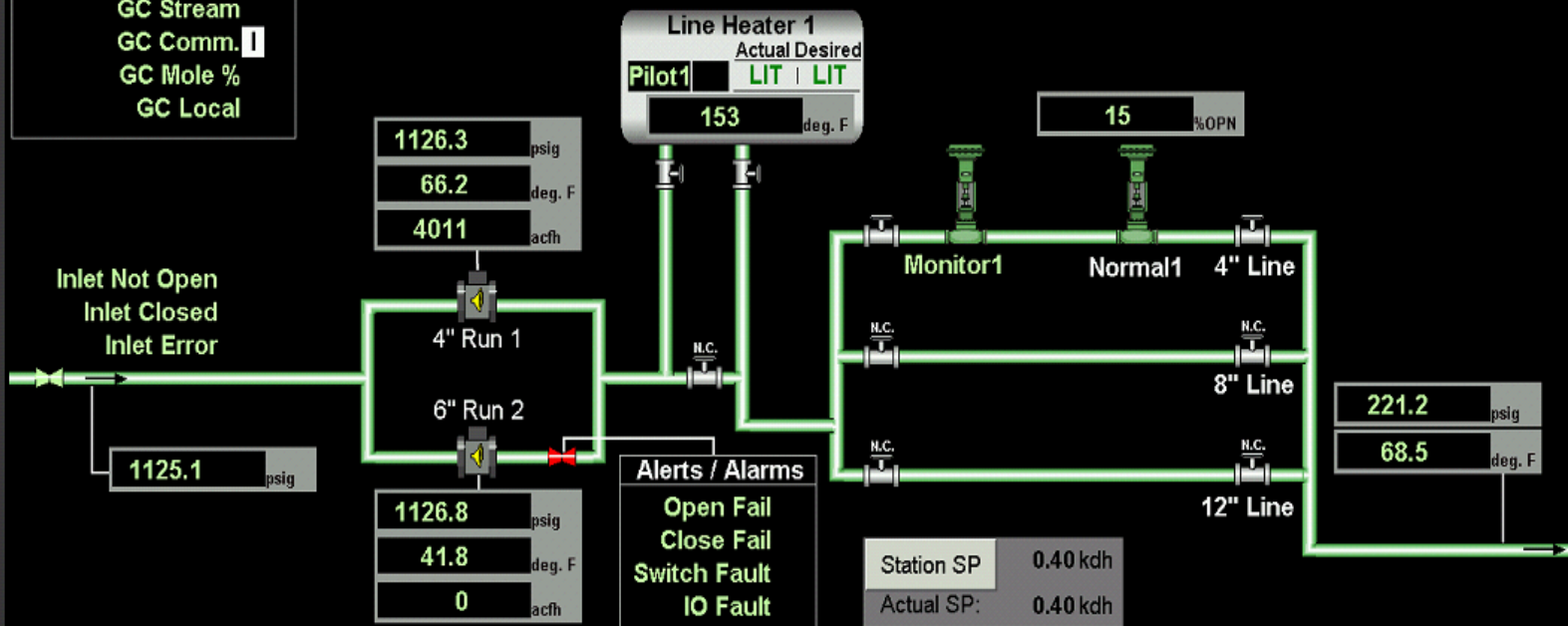
POWER

NORMAL
EMERGENCY
GENERATOR
24VDC

Generator: STOPPED

Willowsford Gate Station

1/26/2015 8:41:33 AM



YZ Pump1 **Stby** Select YZ Pump2 **Run**

LAST CALCULATED RATE: 01/26 08:39

Pneumatic Setpoints

HPOR Pneumatic SP:	270 psig	1 / 20
LPMU Pneumatic SP:	200 psig	1 / 20
Monitor SP:	280 psig	1 / 20

Electronic Setpoints

HPOR Electronic SP:	265 psig
LPMU Electronic SP:	205 psig

Station		Flow Rates		Station Total	
Odor Rate:	0.74 #/mmcf	Run 1:	0.392 kdh	Flow Rate:	0.392 kdh
BTU:	1072.3	Run 2:	0.000 kdh	Acc. Flow:	9.075 kd
Spec. Grav.:	0.604				



WGL Holdings, Inc.

Diversity

Innovation

Service

Sustainability

Performance

Redundancy of Service

- Our product is our energy source
 - It powers our generators
 - It powers our pneumatic backup systems
- Pipes are looped much like a communication ring network
- We maintain an independent pressure monitoring system not connected to our ICS network

Transmission Telemeters Map

1/27/2015 11:01:51 AM

Overview	Login	Alarms
Web Reports	Gate Trend	Score board
RTU'S	TM'S	TM Pilot

Frederick Map	Shenandoah Gas Map
---------------	--------------------

N. Maryland Sub Menu	S. Maryland Sub Menu
----------------------	----------------------

W. Virginia Sub Menu	E. Virginia Sub Menu
----------------------	----------------------

Plants Sub Menu	Hexane Sub Menu
-----------------	-----------------

Maryland Map	Transmission Map
--------------	------------------

Wash. DC Map	Virginia Map
--------------	--------------

Sub Menu:

Southern Maryland
ALLENTOWN
AQUASCO
BRANDYWINE
CHALK POINT
GARDINER RD
PANDA
PATUXENT
PR. FREDERICK
WHITE PLAINS

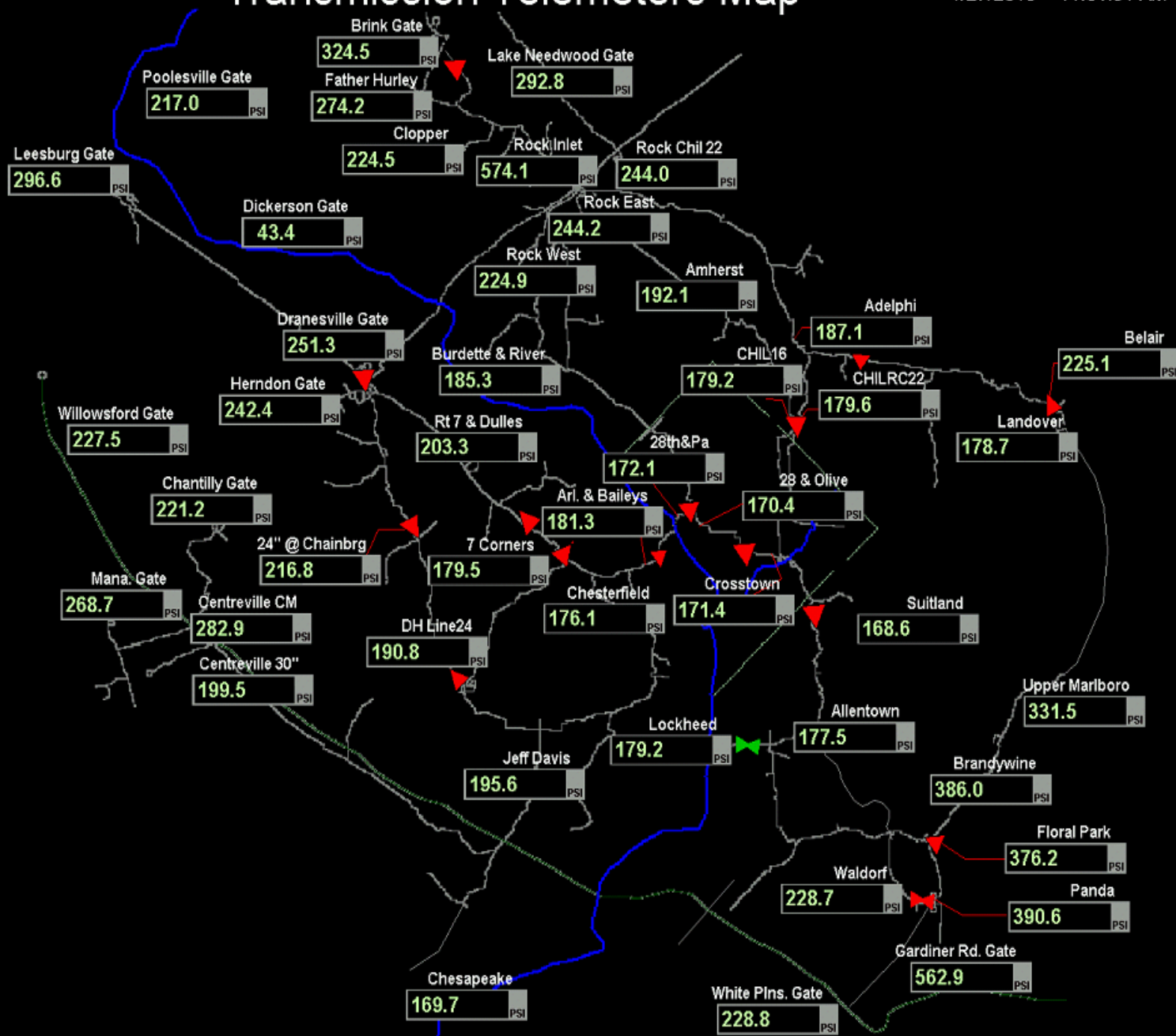
New WorkFlow Activity	API Help Popup
-----------------------	----------------

User: VIEW

SCU: 0

\\PSPA001\SHARE\DYNAMICS\VIC_SOCIATMT

AA Tag List	Alarm List
-------------	------------



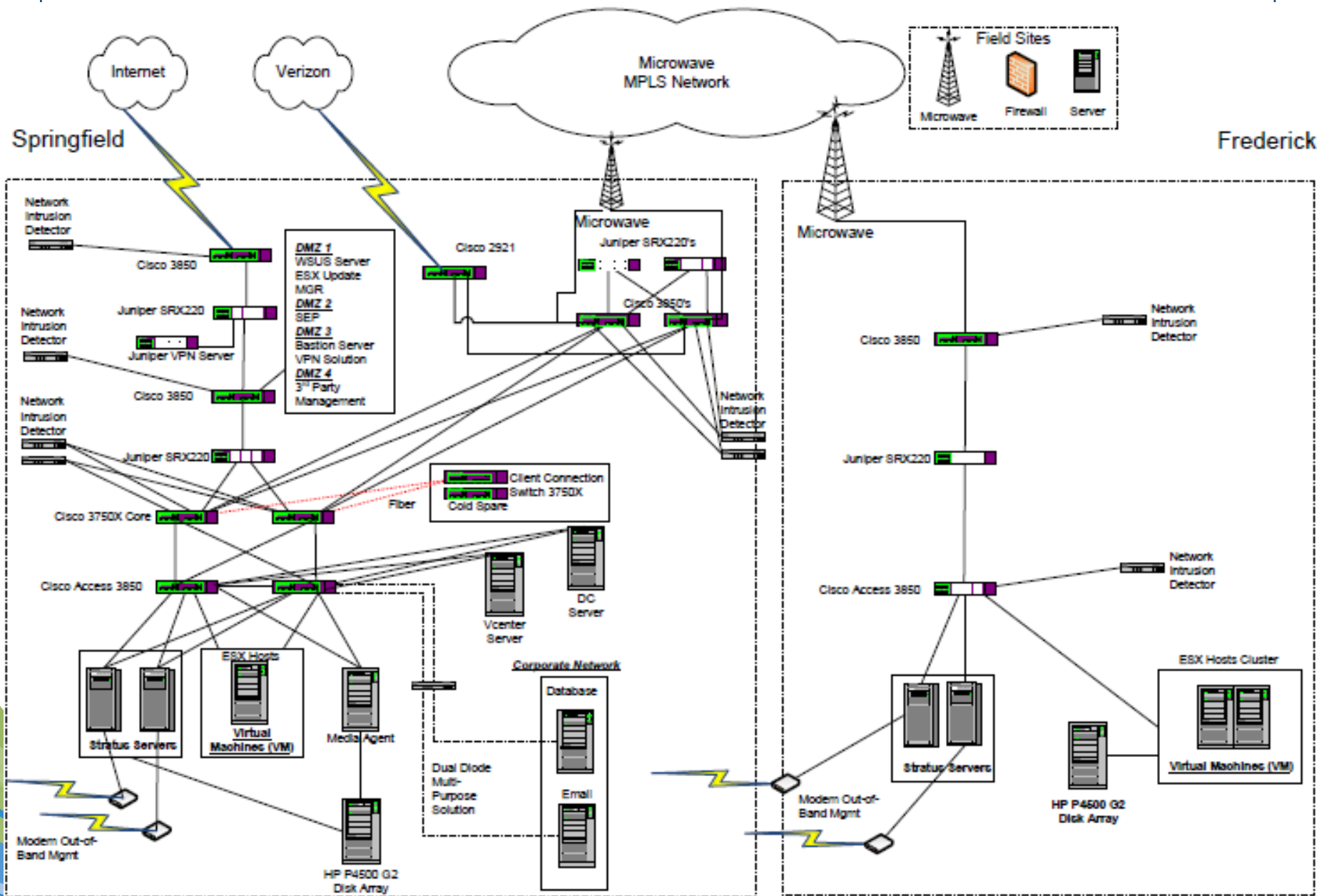
Diversity

Innovation

Service

Sustainability

Performance



Diversity

Innovation

Service

Sustainability

Performance

WGL Holdings, Inc. Ask Us.



Diversity

Innovation

Service

Sustainability

Performance



Diversity

Innovation

Service

Sustainability

Performance



Diversity

Innovation

Service

Sustainability

Performance

Entities Vying to Regulate the Natural Gas Industry

DHS – Department of Homeland Security

CFATS - Chemical Facility Anti-Terrorism Standards (DHS Subcommittee)

DOE – Department of Energy

DOT – Department of Transportation (Regulates transportation pipelines)

FERC – Federal Energy Regulatory Commission (Regulates transportation pipelines, an Administration under DOT)



Diversity

Innovation

Service

Sustainability

Performance

Entities Vying to Regulate the Natural Gas Industry

PHMSA – Pipeline and Hazardous Material Safety Administration (Regulates ALL Natural Gas Control Rooms, an Administration under DOT)

NERC - North American Electric Reliability Corporation (Regulates the Electric Industry, CIP standards)

TSA – Transportation Security Administration

PSC – Public Service Commissions

AGA – American Gas Association



Diversity

Innovation

Service

Sustainability

Performance

Methods Employed for Security

1. Network Isolation
2. Staff Support (On Site, Vetted)
3. NO Unescorted Remote Access
4. NO file transport into the infrastructure
5. Sanitized transport out of the infrastructure
6. NO Wireless communications
7. Daily virus signatures

Methods Employed for Security

8. Monthly OS patching
9. Quarterly ICS patching
10. Encrypted MW and RF traffic
11. VPN tunnel and Certified Application Traffic
12. Event and traffic logging with analysis
13. Failover to the backup system monthly
14. Practice ICP quarterly

Methods Employed for Security

15. Practice BCP annually

16. Practice Regional Simulations with External Resources (Fire, Police, Other Gas Companies, FBI, DHS, Vendors, etc.) semi-annually

Challenges

1. We have a Large Territory with exposed infrastructure
2. We are concerned about the supply chain
3. We are concerned about insider capabilities
4. We are concerned about penetration testing of the production network

Questions



Diversity

Innovation

Service

Sustainability

Performance