



AI - Innovations

Ramesh Menon

Chief Architect | Federal CTO

rrmenon@us.ibm.com

2019 AFCEA-GMU Critical Issues in C4I Symposium



The evolution of AI

Narrow AI
Emerging

Broad AI
Disruptive and
Pervasive

General AI
Revolutionary

Watson is creating a new partnership between humans and technology

Humans
excel at

COMMON SENSE (with biases)
MORALS
IMAGINATION
COMPASSION
DILEMMAS
ABSTRACTION
DREAMING
GENERALIZATION



AI Systems
excel at

LOCATING KNOWLEDGE
NATURAL LANGUAGE
PATTERN IDENTIFICATION
MACHINE LEARNING
ELIMINATING BIASES
PROVIDING ENDLESS CAPACITY

Can
artificial
intelligence

expand
a human
mind?

IBM
Project
Debater



IBM Project Debater

“We should subsidize preschool”

Watsons View?

- subsidizing preschool isn't just a matter of finance — it's a moral and political imperative
- cited research showing that investment in preschool results in more successful lives, including better income and health as well as a decreased likelihood to be involved in crime.

Harish Natarajan POV

- preschool subsidy doesn't effectively address the root causes of poverty and is simply “a politically motivated giveaway” to the middle class



On February 11th, 2019



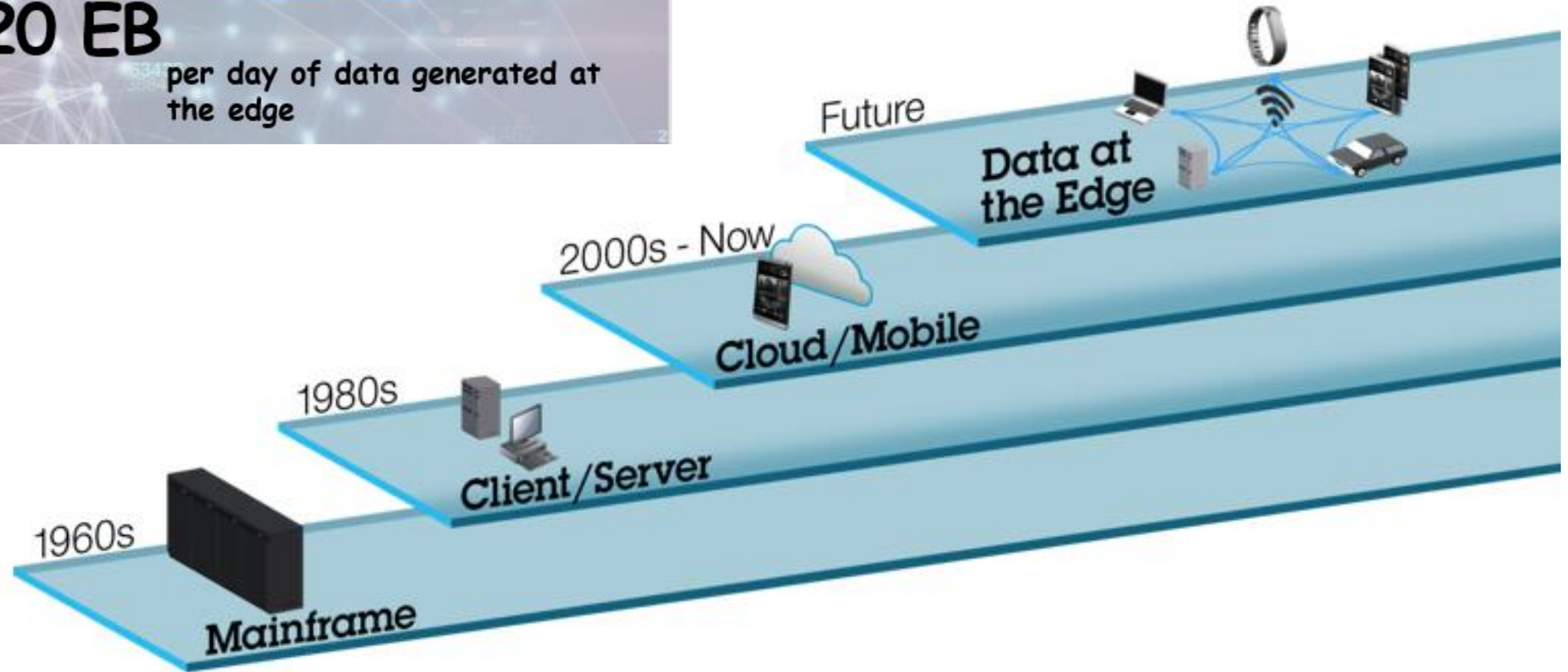
CMU creations help the visually impaired navigate the airport

Ref - <https://bit.ly/2WsMjM1>

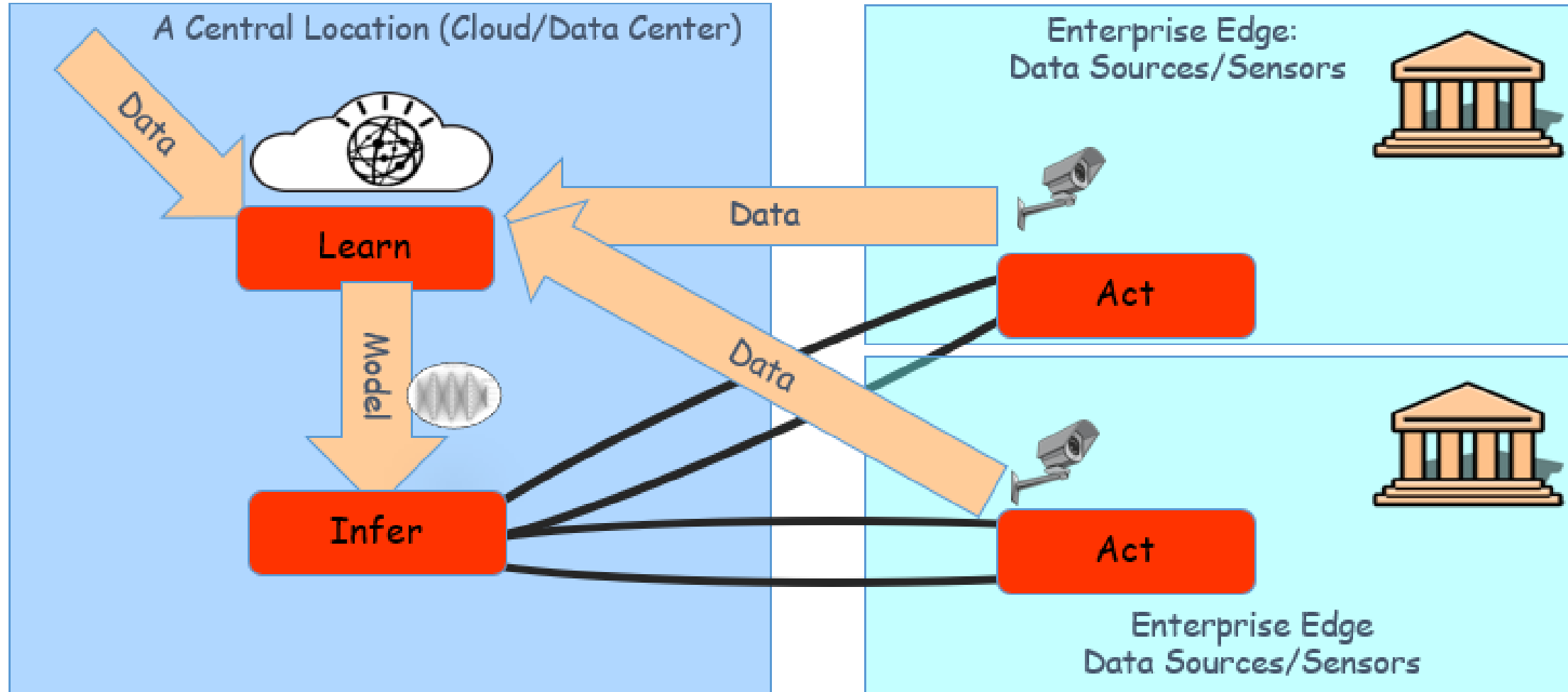
A new IT paradigm is emerging at the edge



20 EB
per day of data generated at
the edge

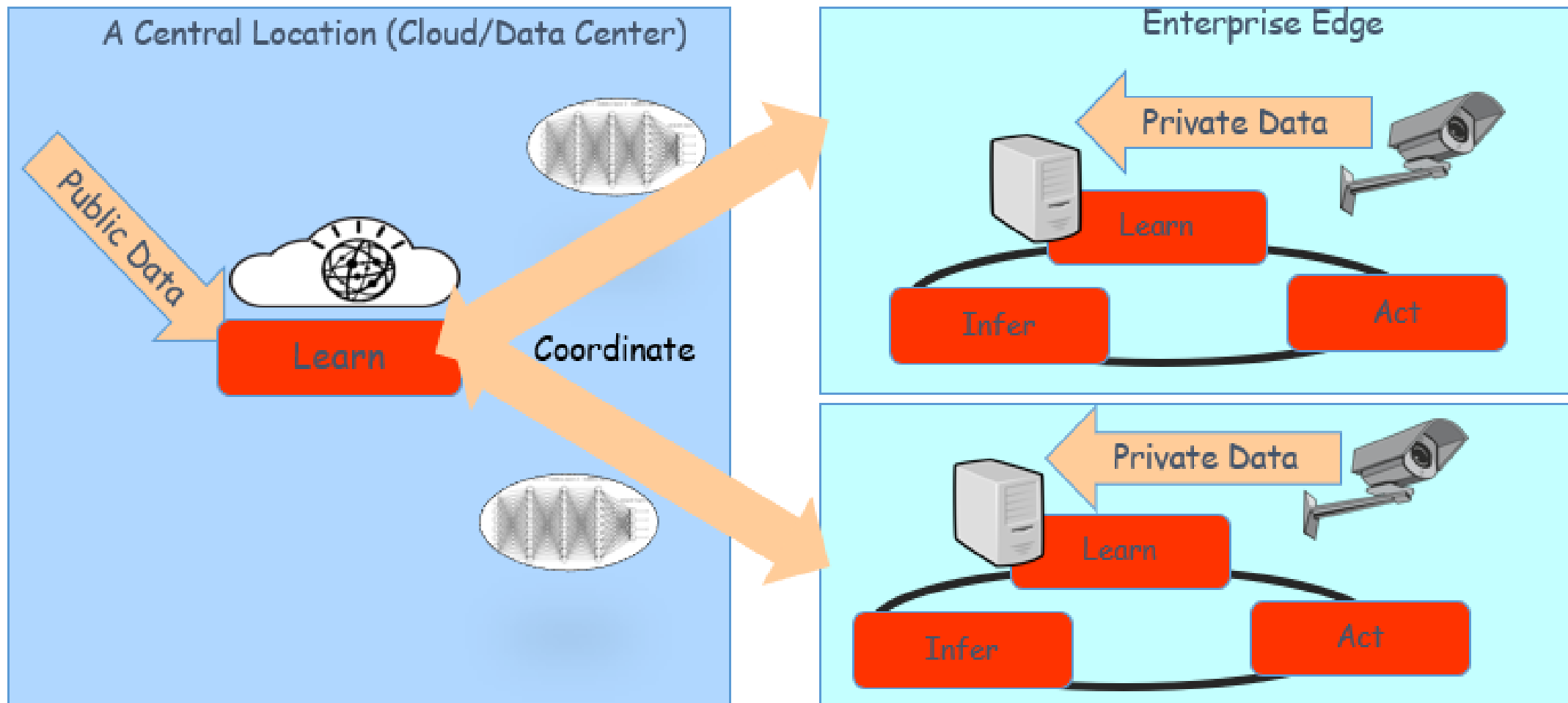


The current prevalent model for creating AI based solution



Regulations, Privacy Concerns, Network costs, Latency, Bandwidth Constraints are a hurdle for AI Solutions in many contexts.

AI @ Edge: Fully Distributed Model



Learning happens at many different locations, and different locations coordinate the models they learn with each other

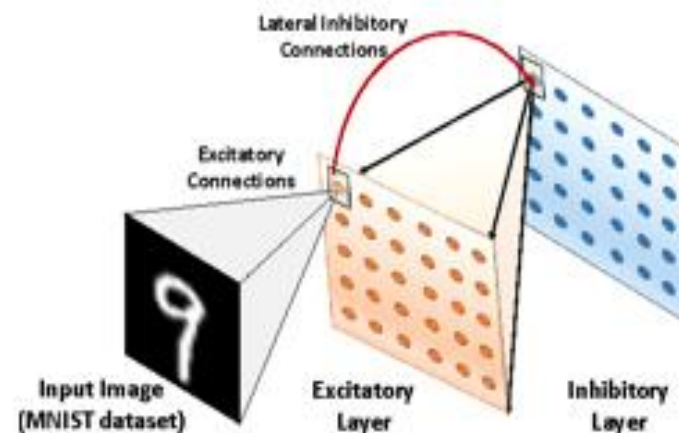
AI @ Edge Challenge IV - Learning to Forget



- New privacy requirements (EU GDPR, California Privacy) has built-in provisions for right to forget
- In machine learning models, especially deep learning models, one input datum can potentially impact millions of model parameters
- How to provably "forget" one datum (vital to crowdsourced IoT solutions to provide an opt-out)
- First of a kind solution for a simple machine learning model (ridge regression - a generalization of linear regression) that simultaneously provably supports both incremental and decremental learning



Courtesy: <https://livescience.com>



Complex dependency structure makes forgetting hard

Staying competitive in the cognitive era will demand an effective use of intelligent automation

Invest with intention

- Prioritize the landscape of emerging technologies
- Always align technology with business strategies and goals
- Investing intentionally requires detailed execution plans
 - ✓ Impact analysis
 - ✓ Communication plans
 - ✓ Change management

Rebuild the business for automation

- Layering new technologies on top of old business processes is not productive
- Rethink processes for the cognitive age – optimize workflows for automation
- Envision the end; enable through prototyping; repair and scale

Educate to automate

- Build agile, innovative workforces
- Encourage employees to think “big”, focus on higher-level tasks
- Participate in broader ecosystems to expand new ways of thinking and working

Main issues/concerns in AI

Short-term issues:

- Bias
- Explainability
- Transparency
- Accountability
- Data responsibility
- Value alignment
- Ethics/morality

- Impact on jobs and society

Long-term issues:

- Singularity
- Superintelligence
- Off switch problem



Human + Machine: Ethical challenges

Value alignment

- Is it following my same (ethical) principles?

Fairness

- Is it fair in its decisions, or does it favour some group more than others?

Explanations

- Why is it making/suggesting a certain decision?

Interpretability

- Can I check its reasoning process?

Data handling

- How is it using my data? Is it reusing it for other customers? Is it sharing it with others?

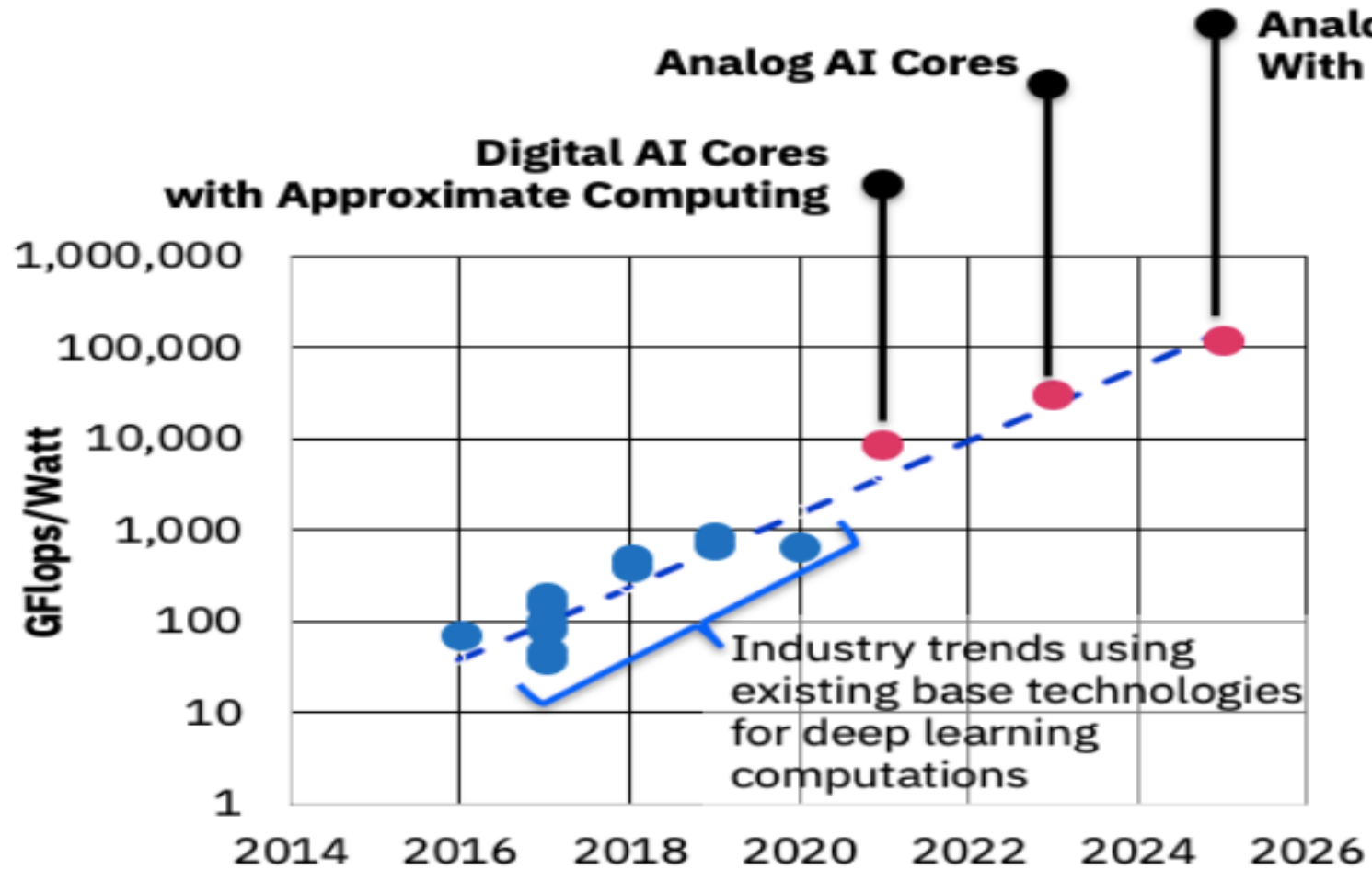


QUEST – AI for Structured Data

Quest uses Natural Language Processing (NLP) to “automatically create SQL queries” from English sentences. Questions can be typed or spoken.

This extends the use of Watson AI & MDC2 platforms to support both un-structured and structured data.

SWAP AI Chips – 1000x Performance Increase



The most powerful computer on the planet

The Summit supercomputer at Oak Ridge National Laboratory has reached speeds of 200 petaflops. Summit will help us model supernovas, pioneer new materials and explore cancer, genetics and the environment — using technologies available to all businesses.



IBM Data & AI Portfolio

Everything you need for Enterprise AI, on any cloud

The Ladder to AI



Open Source meets a
multicloud, working as ONE



AI on IBM Cloud Private for Data

Add-on AI Services

Watson Studio/ML Data Science Premium

*Premium tools to design,
build & deploy AI models*



Watson OpenScale

▪ *Operational optimization services*

Watson Assistant

▪ *Conversational AI services*

Watson Discovery

▪ *Knowledge discovery AI services*

Watson APIs

▪ *Interactive AI services (e.g., speech)*

AI Digital Automation

▪ *AI-automated business processes*

Foundational AI Services



AI Services

Open Source frameworks to build,
train and deploy Machine Learning
models powered by **Watson
Studio** and **Machine Learning**



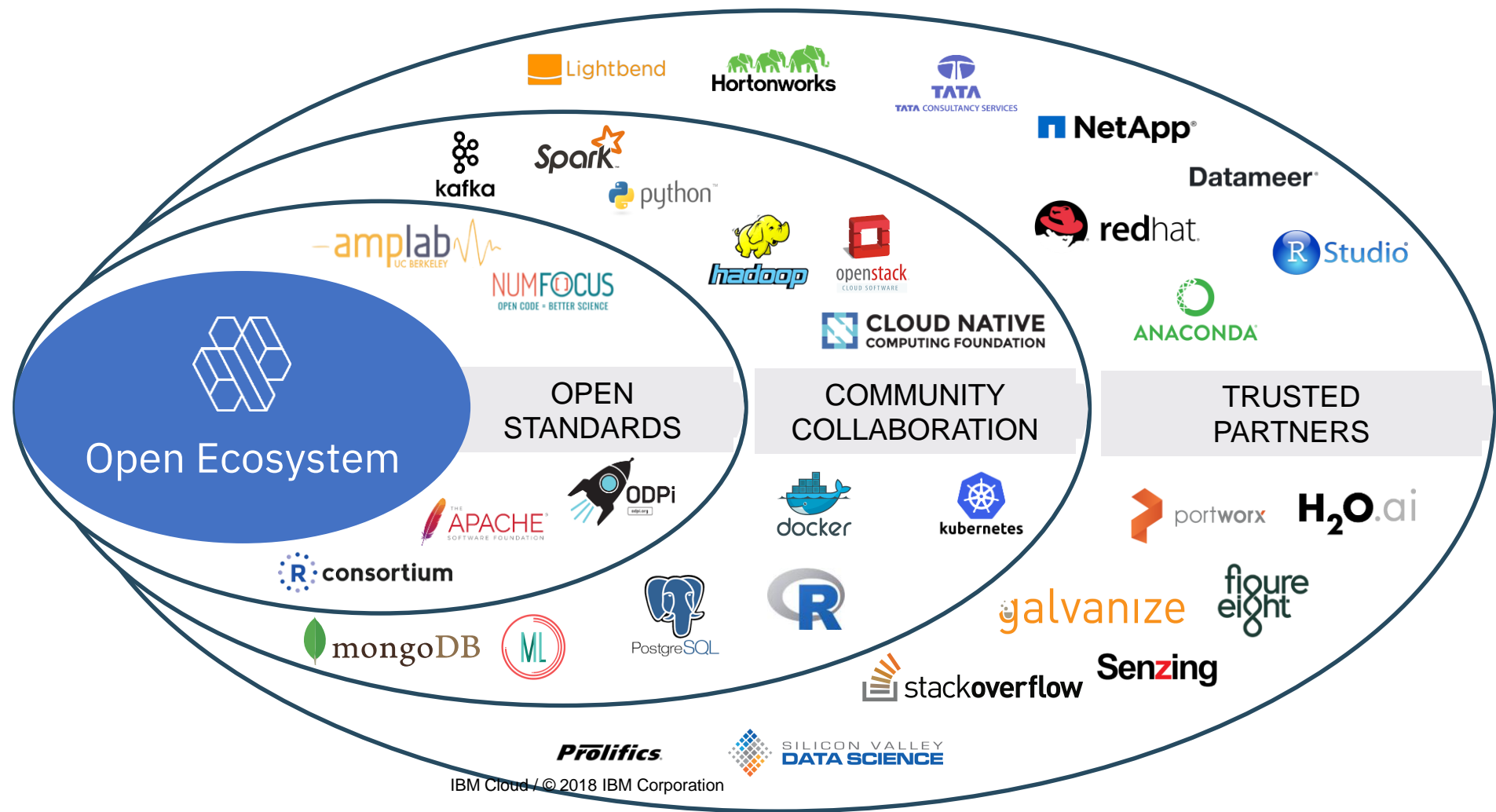
- Data visualization
- Machine learning learning
- Model build & deploy
- Model management
- Dashboards & reporting

Data Collection Services

Data Organization Services



ICP for Data is a platform with a thriving Open Ecosystem – where we work with open standards, communities, and partners



We continue to innovate and touch every aspect of modern life, even beyond the unexpected...



IBM

